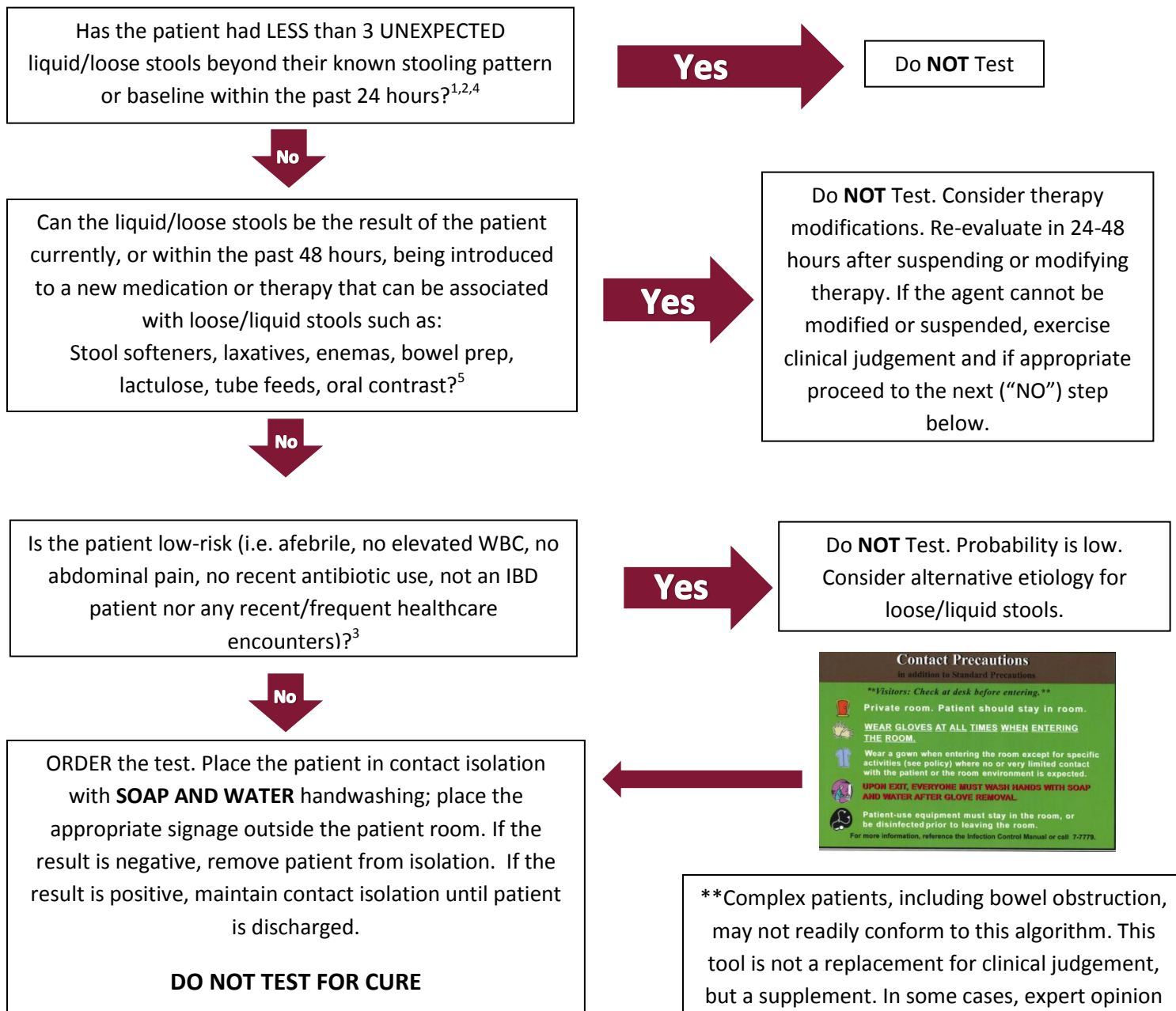




# Adult Inpatient Testing Algorithm for Clostridium Difficile Infection (CDI)



This document has been adapted for Marshfield Medical Center from the *UW Health Adult Inpatient Testing Algorithm for Clostridium Difficile Infection (CDI)*  
Copyright©2016

References:

1. Surawicz CM, et al. Am J Gastroenterol. 2013 Apr; 108(4):478-98.
2. Peterson, LR, Robicsek A. Ann Intern Med 2009; 151:176-179.
3. [http://www.wakehealth.edu/uploadedFiles/User\\_Content/SchoolOfMedicine/Departments/CAUSE/PPT\\_and\\_PDF\\_files/CDI%20Decision%20Support%20Tree%20Algorithm%20-%2006%2026%2014.pdf](http://www.wakehealth.edu/uploadedFiles/User_Content/SchoolOfMedicine/Departments/CAUSE/PPT_and_PDF_files/CDI%20Decision%20Support%20Tree%20Algorithm%20-%2006%2026%2014.pdf)
4. Cohen S. et al Infect Control Hosp Epidemiol. 2010 May;31(5):431-55.
5. Brazier JS. J Antimicrob Chemother 1998; 41
6. <http://www.uptodate.com/contents/clostridium-difficile-in-adults-treatment>
7. Bagdasarian N, Rao K, Malani PN. JAMA. 2015;313(4):398-408.

**NOTE:** Laboratory will reject any specimen with formed stool.

**ONLY 1 Test should be ordered every 7 days**

PCR is highly sensitive. More frequent testing may yield a false positive, leading to unnecessary antibiotic use.

**Contacts:**  
**MMC Infection Prevention and Control 715-387-7779**  
**Microbiology -Marshfield Labs CS 800-222-5835**